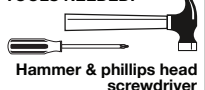
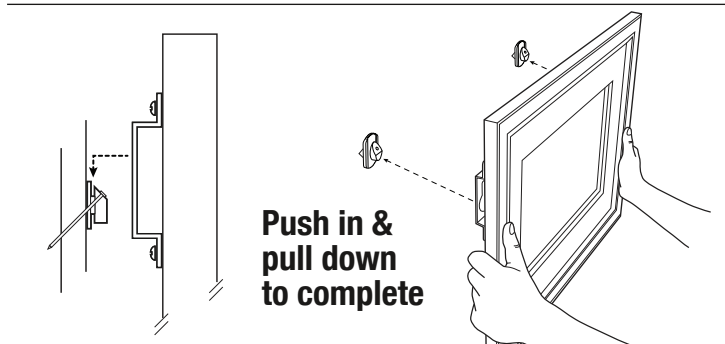
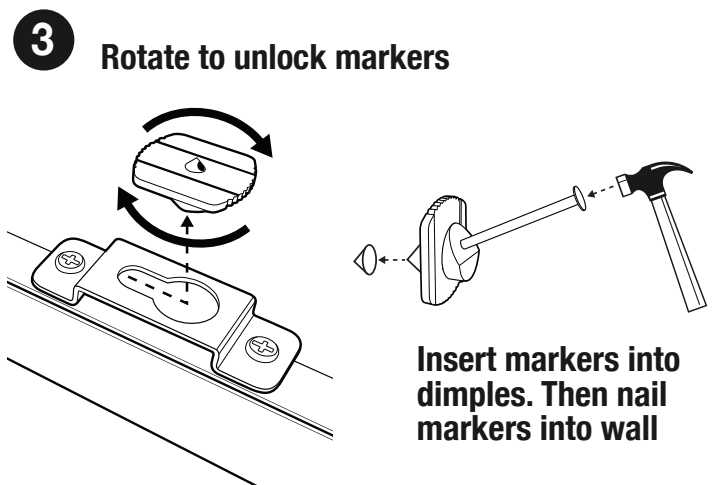
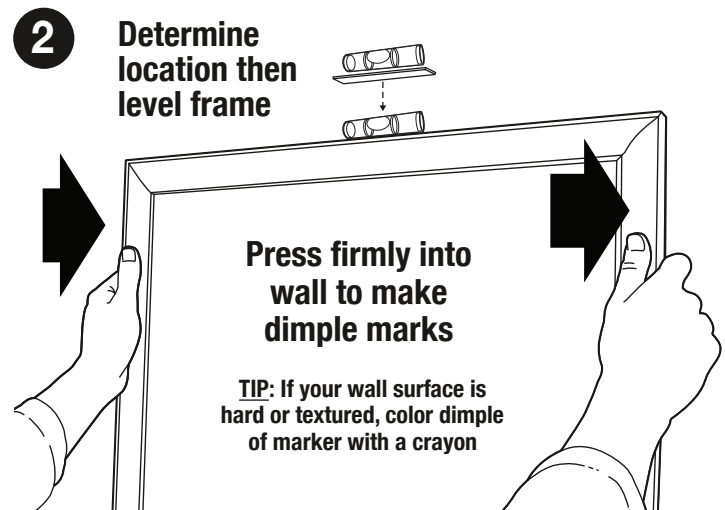
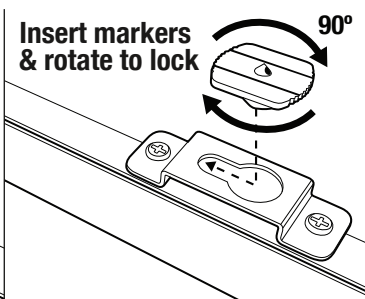
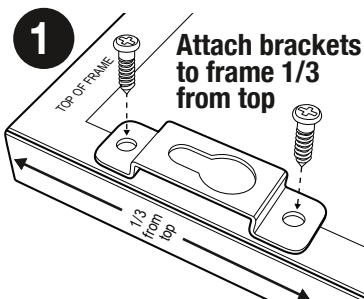


Wireless Hanging System™ INSTALLATION INSTRUCTIONS

TOOLS NEEDED:



PARTS LIST



This system is recommended for framed products up to 50 lbs.

Installation video available at: www.pp-mfg.com

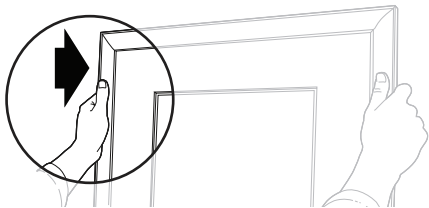
Copyright 2010 Picture Perfect, LLC. All rights reserved.

U.S. Patent No. 7497028. Other patents pending.

Made in China

THE 2-STEP MARKING METHOD

Recommended for all frames
wider than 20 inches

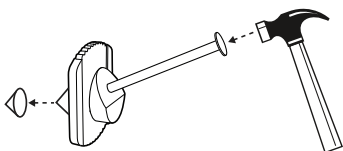
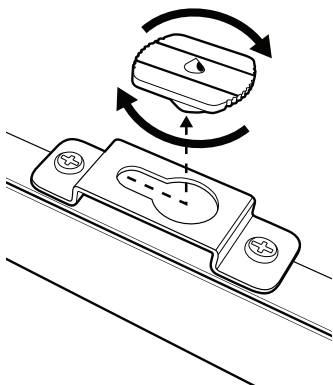


1

- Attach brackets to both sides of frame
- Insert a marker into the left bracket
- Determine desired mounting location
- Press frame firmly into wall surface to create left dimple mark

2

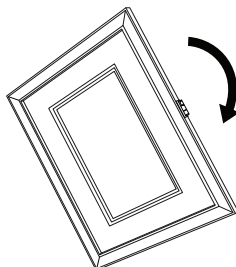
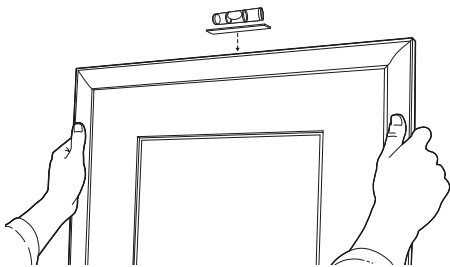
Rotate marker to unlock & remove



Insert marker into
dimple and nail
into wall

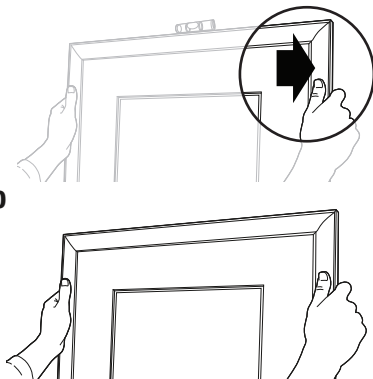
3

- Insert a marker into the right bracket
- Affix foam tape & attach level to frame
- Seat left bracket onto the marker on the wall
- Allow frame to swing down gently



4

- Raise frame until bubble reads "level"
- Press right side of frame firmly into wall surface to make right dimple mark
- Allow frame to swing down freely
- Repeat Step #2 to install the right marker



Seat right bracket onto right marker and
remove level to complete installation